

FREE CHART



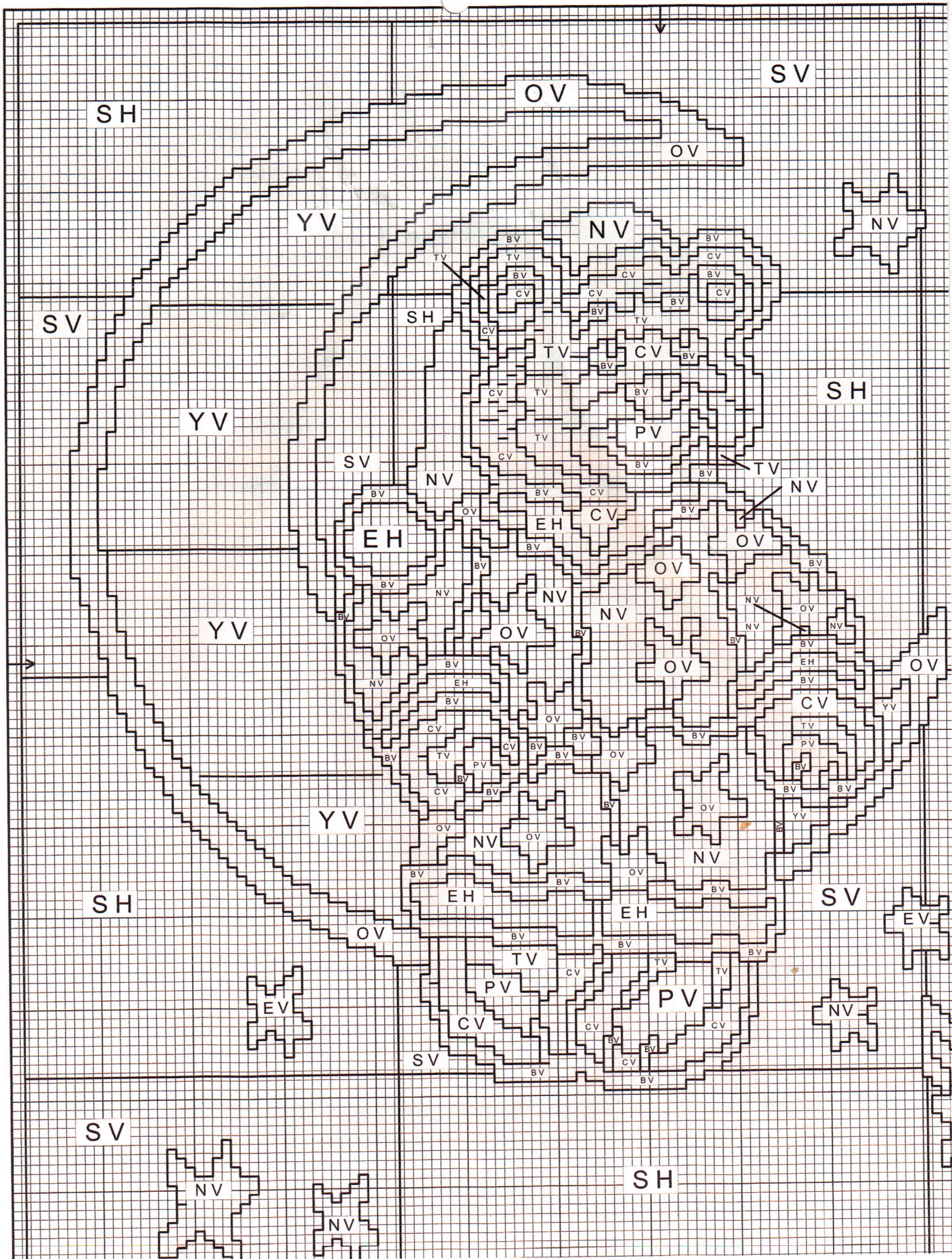
ZWEIGART®

PS.113

# *Ted on the Moon*









# Ted on the Moon

Stitched on Zweigart 14 count Interlock Canvas, Art.604.100.56.

Use one strand of DMC Tapestry Wool for working Longstitch.

Use a size 18 DMC needle for stitching.

**Stitched Design Size:** 29cm x 29cm

**Suggested Canvas Size:** 40cm x 40cm

## DMC Tapestry Wool Key

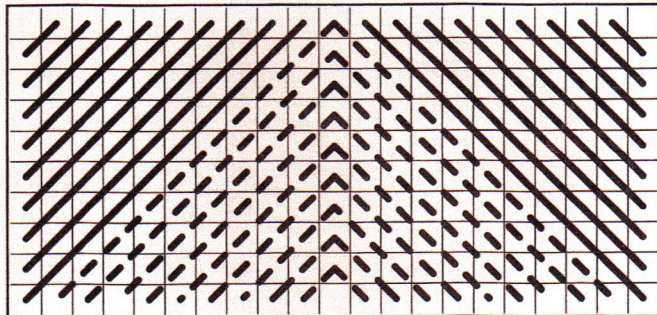
Symbol Colour Description Skeins

E	Ecru	Ecru	3
B	Noir	Black	1
O	7051	Orange	1
P	7173	Peach	1
C	7479	Chocolate	1
Y	7726	Yellow	1
N	7796	Navy	3
T	7846	Tan	1
S	7035	Sky	6

V Vertical Longstitch

H Horizontal Longstitch

— 7796 Used in Longstitch  
- - - Ecru border pattern



## Border Pattern

Eyes & centre of Nose: Work in Vertical Longstitch using Ecru wool.

When completed all Longstitch design, repeat the border pattern along all four sides and work in Straight Stitch following the colours indicated in the colour key.

SH

EV

EV

EV

EV

SV

SH

OV

YV

YV

OV

OV

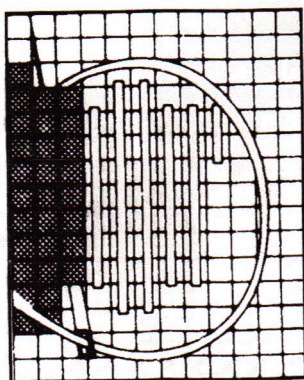
SV



## Longstitch Instructions

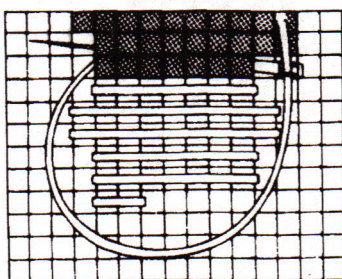
1. To start, choose an area that matches your selected wool colour. Thread the needle and tie a knot at the end of the wool. Begin with the needle at the back of the canvas.
2. Check your design chart to see the type of stitch you are about to make. It will either be Vertical Longstitch, Horizontal Longstitch or Straight Stitch. Refer to the diagrams and instructions below.
3. Take the needle to the back of the canvas and push it to the front on the line where you choose to start.
4. Take the needle across the area to be stitched and insert the needle through to the back of the canvas to complete the stitch. Bring the needle out to the front of the canvas again, next to the previous stitch. Continue this step until you have completely filled the section.
5. Fill all shapes in the same way using the colour indicated on the chart.
6. Finish off the thread at the back of the work by threading the wool under the last few stitches. Trim excess.

NOTE: Where areas of Longstitch meet, make sure there are two stitches in the one hole.



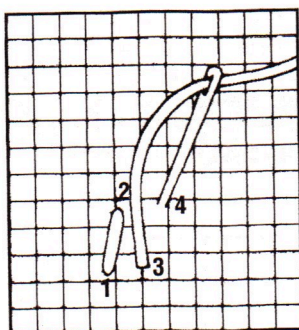
### Longstitch (Vertical)

Begin at the bottom left or right corner of the colour to be worked and take the needle directly upwards. Insert the needle and take the thread at the back to the next bottom space. Repeat.



### Longstitch (Horizontal)

This is worked in the same way as the Vertical Longstitch but you begin at the bottom or top of the colour and take the stitch directly across at the front. Take the thread upwards to the next space.



### Straight Stitch

Come up at 1 from the back of the canvas and down through the front at 2.